

The Trust for Public Land (TPL) Ramirez Canyon Phase III Acquisition

Proposition A Grant Amount: \$700,000.00 (Needs to assigned to TPL by SMMC-Big 5 Excess)

Total Project Cost: \$1,350,000.00

Other Funding Sources: \$500,000.00 California Natural Resources EEMP Grant; \$150,000.00 California State Coastal Conservancy

Acres to be acquired: 47.68 acres (1 parcel)

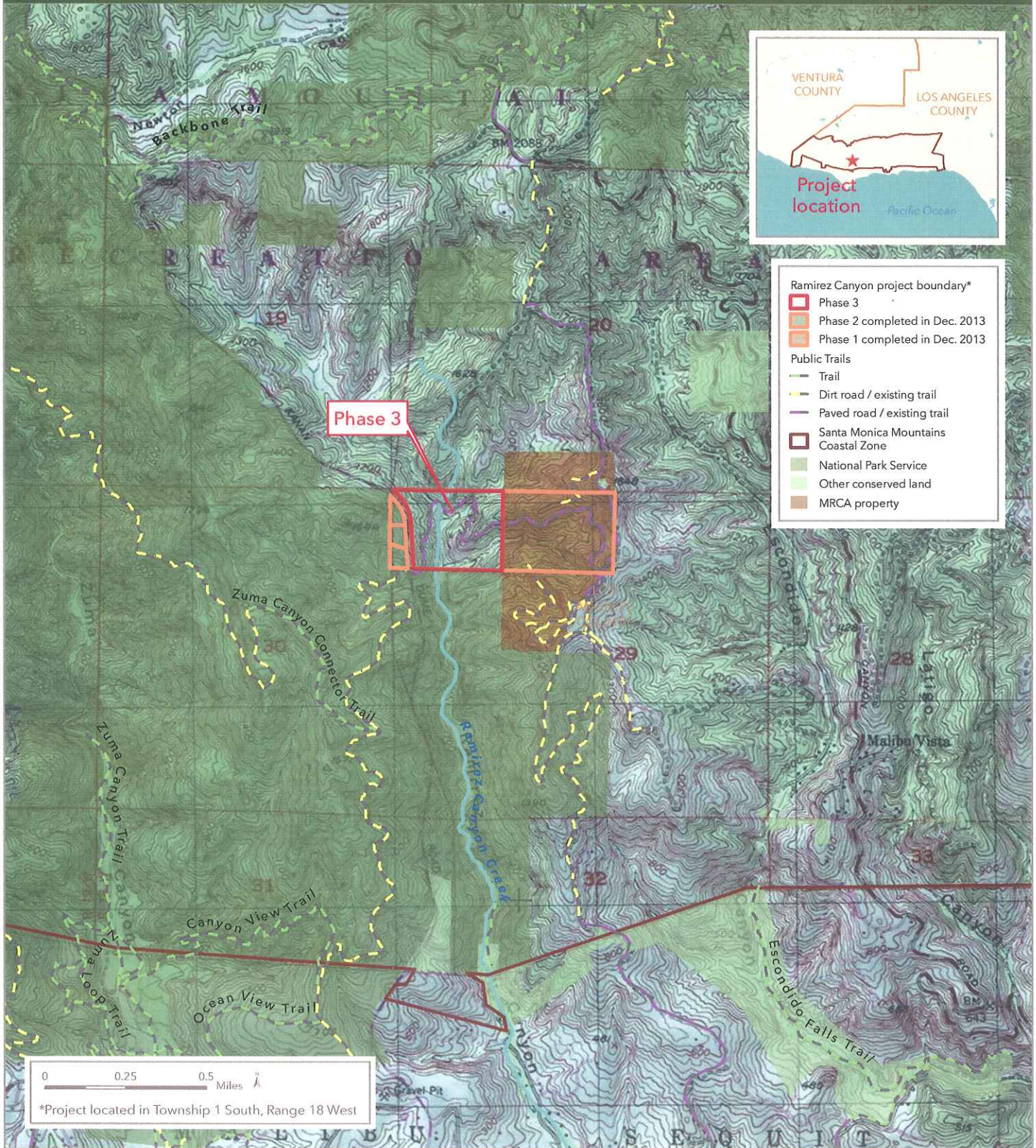
Appraisal: To be available by November 2014; Needs approval of DGS (January 2015)

Background Info

This is the final phase following two successful acquisition for the National Park Service and the Mountains Recreation and Conservation Authority in December 2013. The remaining and final 47.68-acre parcel contains a perennial stream, flowing directly through the property to the Pacific Ocean and provides important riparian habitat for diverse plant and animal species found throughout all phases of the Project. Plus by acquiring this parcel, we would also be consolidating public ownership in the area.

RAMIREZ CANYON

LOS ANGELES COUNTY, CALIFORNIA



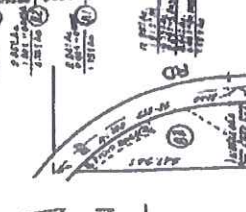
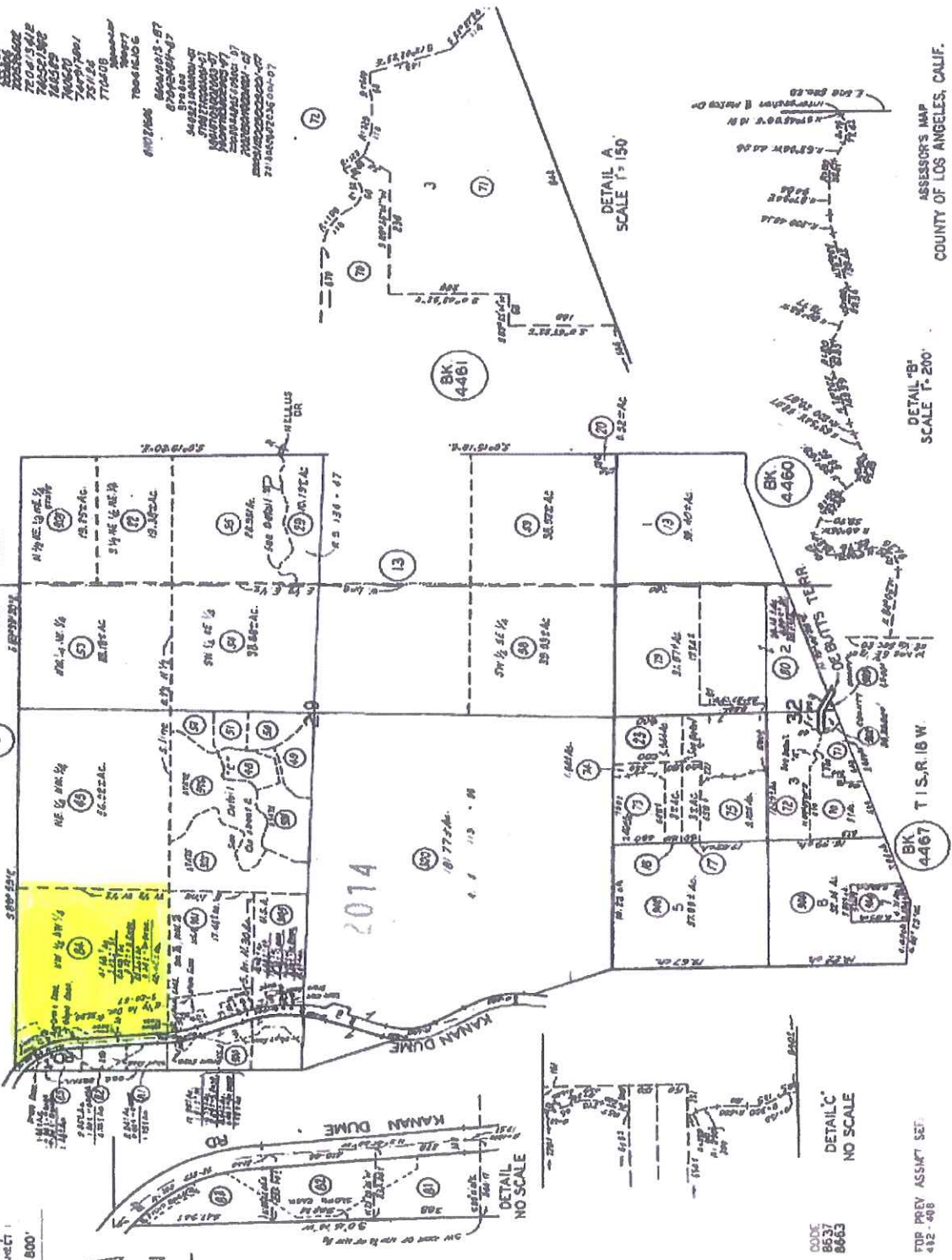
THE TRUST *for* PUBLIC LAND
LAND FOR PEOPLE

4465 4

sheet 1

SCALE 1" = 800'

- 700116 003
- 700116 004
- 700116 005
- 700116 006
- 700116 007
- 700116 008
- 700116 009
- 700116 010
- 700116 011
- 700116 012
- 700116 013
- 700116 014
- 700116 015
- 700116 016
- 700116 017
- 700116 018
- 700116 019
- 700116 020
- 700116 021
- 700116 022
- 700116 023
- 700116 024
- 700116 025
- 700116 026
- 700116 027
- 700116 028
- 700116 029
- 700116 030
- 700116 031
- 700116 032
- 700116 033
- 700116 034
- 700116 035
- 700116 036
- 700116 037
- 700116 038
- 700116 039
- 700116 040
- 700116 041
- 700116 042
- 700116 043
- 700116 044
- 700116 045
- 700116 046
- 700116 047
- 700116 048
- 700116 049
- 700116 050
- 700116 051
- 700116 052
- 700116 053
- 700116 054
- 700116 055
- 700116 056
- 700116 057
- 700116 058
- 700116 059
- 700116 060
- 700116 061
- 700116 062
- 700116 063
- 700116 064
- 700116 065
- 700116 066
- 700116 067
- 700116 068
- 700116 069
- 700116 070
- 700116 071
- 700116 072
- 700116 073
- 700116 074
- 700116 075
- 700116 076
- 700116 077
- 700116 078
- 700116 079
- 700116 080
- 700116 081
- 700116 082
- 700116 083
- 700116 084
- 700116 085
- 700116 086
- 700116 087
- 700116 088
- 700116 089
- 700116 090
- 700116 091
- 700116 092
- 700116 093
- 700116 094
- 700116 095
- 700116 096
- 700116 097
- 700116 098
- 700116 099
- 700116 100



DETAIL A
SCALE 1" = 150'

DETAIL B
SCALE 1" = 200'

DETAIL C
NO SCALE

CODE
8637
8663

FOR PREVIEW ASSHKT SET:
412-488

ASSESSOR'S MAP
COUNTY OF LOS ANGELES, CALIF.